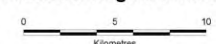


**Legend**

- ★ Town
- Major road
- River
- RFA region boundary
- Cadastral boundary
- Land to which the Integrated Forestry Operations Approval does not apply
- Reserve under the National Parks and Wildlife Act 1974
- State Forest



**Map 1**  
**Land to which the Integrated Forestry Operations Approval for the Southern Region does not apply**



Scale - 1:100,000 when printed at A0  
 Universal Transverse Mercator Projection - Zone 56  
 Geocentric Datum of Australia 1994

NOTE: This map has been specifically prepared for the application of registration to certain pieces of land. It does not show all land proposed, identified or described as within the information on land affected by actions under the Wilderness Act is available from DECCW.

Map compiled from: NPWS and SF boundaries data from NSW NPWS and FNSW  
 Administrative and Infrastructure data from NSW LPI

Copyright NSW Government, December 2010

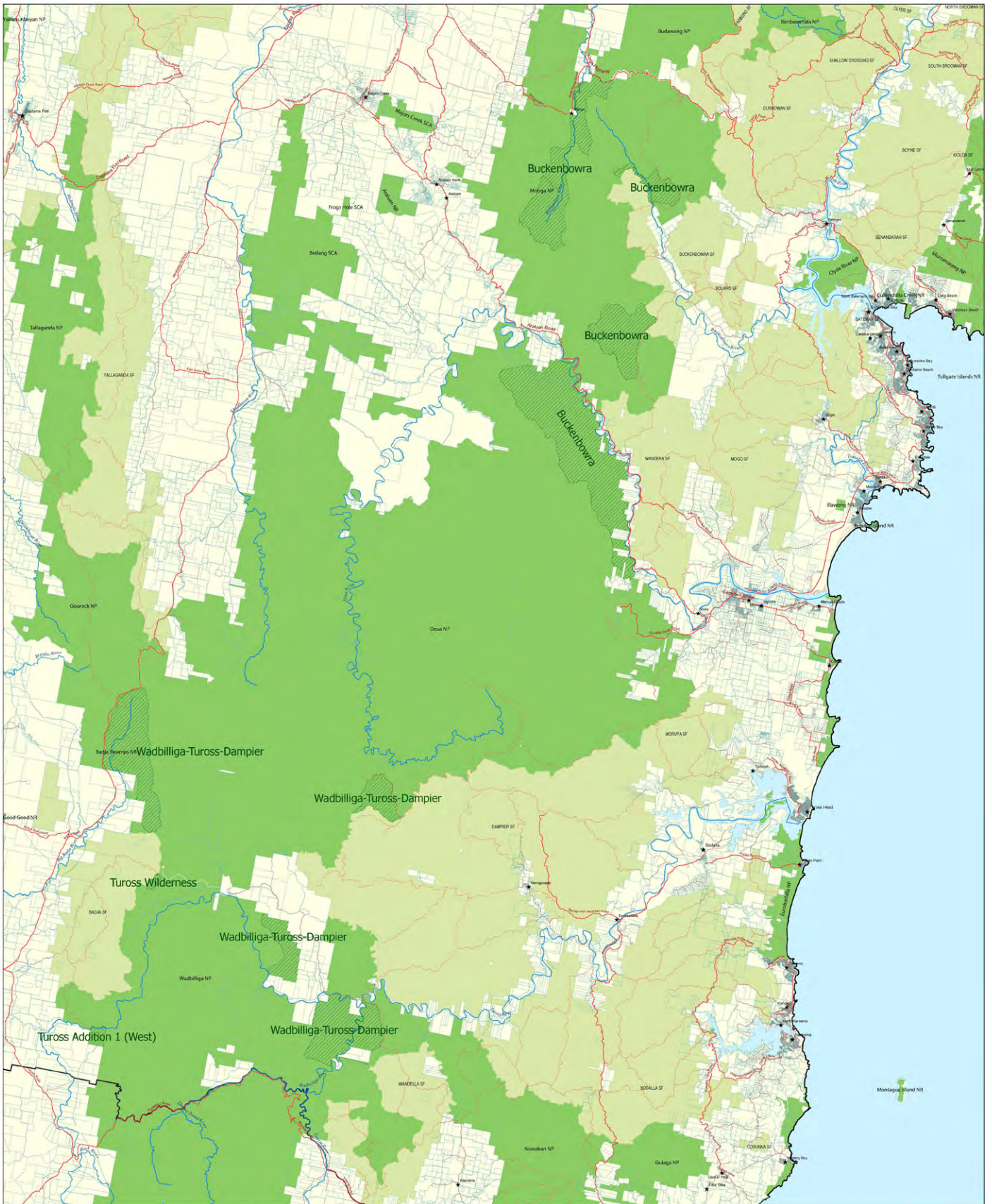
This map is not guaranteed to be free from error or omission. Therefore, the State of NSW and its employees disclaim liability for any and all loss or damage made on the information on the map and any consequences of such loss or omission.



Produced  
 December 2010





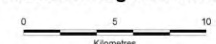


**Legend**

- ★ Town
- Major road
- ~ River
- RFA region boundary
- Cadastral boundary
- ▨ Land to which the Integrated Forestry Operations Approval does not apply
- Reserve under the National Parks and Wildlife Act 1974
- State Forest



**Map 2**  
**Land to which the Integrated Forestry Operations Approval for the Southern Region does not apply**



Scale - 1:100,000 when printed at A0  
 Universal Transverse Mercator Projection - Zone 55  
 Geocentric Datum of Australia 1994

NOTE: This map has been specifically prepared for the application of legislation to certain pieces of land. It does not show all land proposed, identified or declared as wilderness. Information on land affected by actions under the Wilderness Act is available from DECCW.

Map compiled from: NPWS and SF boundaries data from NSW NPWS and FNSW Administrative and Infrastructure data from NSW LPI

Copyright NSW Government, December 2010

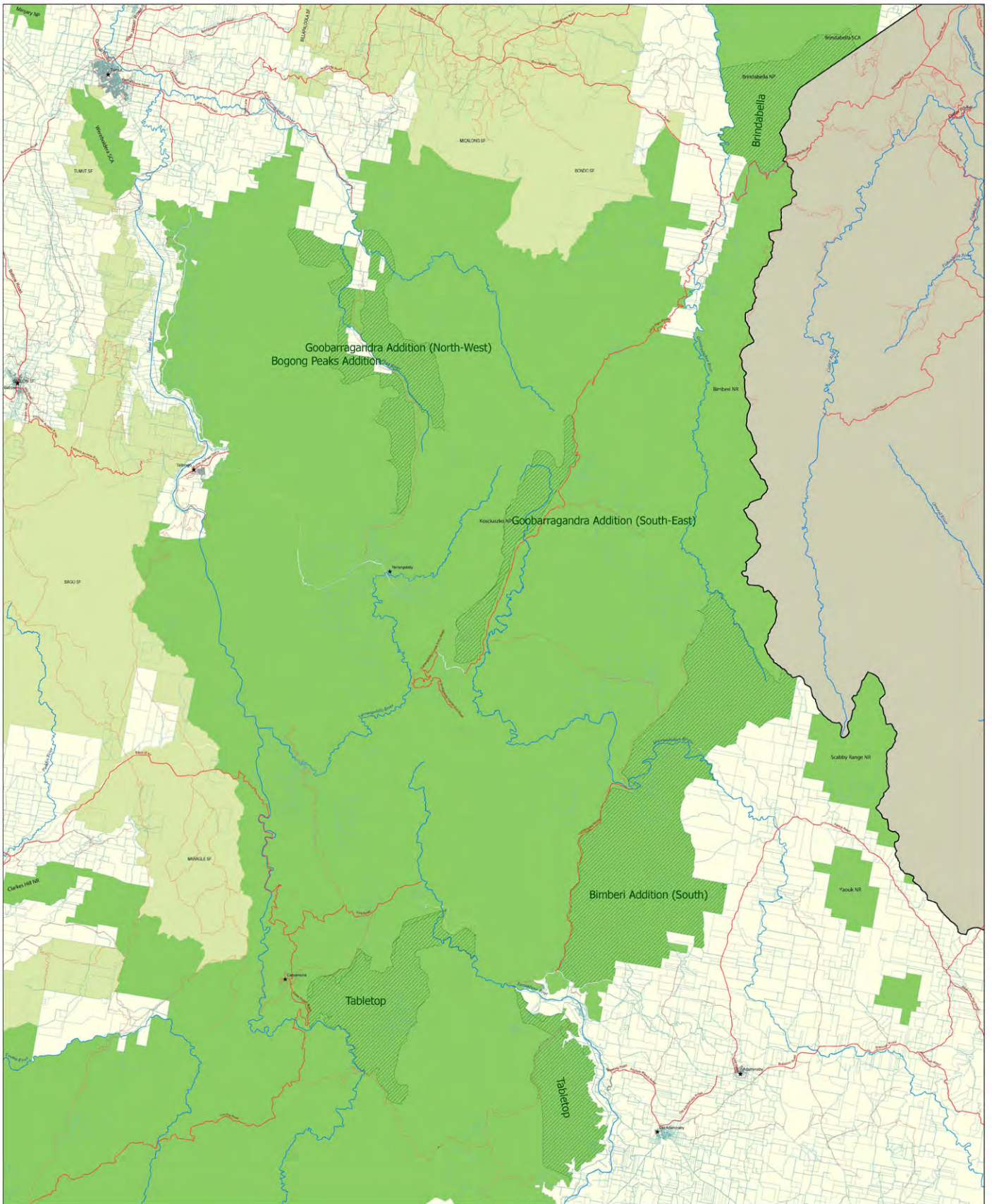
This map is not guaranteed to be free from error or omission. Therefore, the State of NSW and its employees disclaim liability for any act or omission made on the information in the map and any consequences of such act or omission.



Produced  
 December 2010





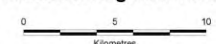


**Legend**

- ★ Town
- Major road
- River
- RFA region boundary
- Cadastral boundary
- ▨ Land to which the Integrated Forestry Operations Approval does not apply
- Reserve under the National Parks and Wildlife Act 1974
- State Forest



**Map 3**  
**Land to which the Integrated Forestry Operations Approval for the Southern Region does not apply**



Scale - 1:100,000 when printed at A0  
 Universal Transverse Mercator Projection - Zone 55  
 Geocentric Datum of Australia 1994

NOTE: This map has been specifically prepared for the application of legislation to certain pieces of land. It does not show all land proposed, identified or declared as wilderness. Information on land affected by actions under the Wilderness Act is available from DECCW.

Map compiled from: NPWS and SF boundaries data from NSW NPWS and FNSW  
 Administrative and Infrastructure data from NSW LPI

Copyright NSW Government, December 2010

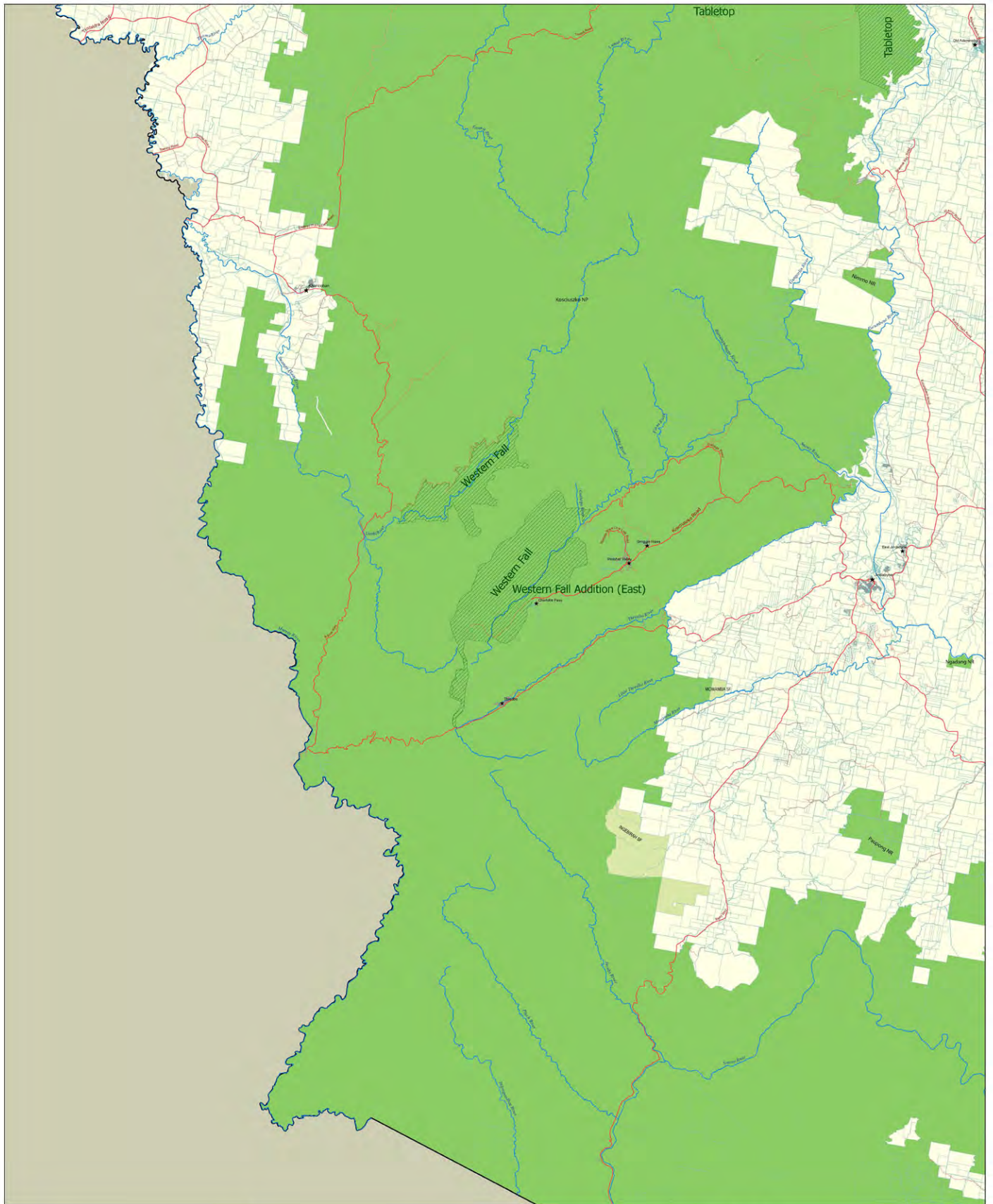
This map is not guaranteed to be free from error or omission. Therefore, the State of NSW and its employees disclaim liability for any act done or omission made on the information on the map and any consequences of such act or omission.



Produced  
 December 2010





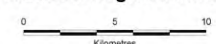


**Legend**

- ★ Town
- Major road
- River
- RFA region boundary
- Cadastral boundary
- ▨ Land to which the Integrated Forestry Operations Approval does not apply
- Reserve under the National Parks and Wildlife Act 1974
- State Forest



**Map 4**  
**Land to which the Integrated Forestry Operations Approval for the Southern Region does not apply**



Scale - 1:100,000 when printed at A0  
 Universal Transverse Mercator Projection - Zone 55  
 Geocentric Datum of Australia 1994



Produced  
 December 2010

NOTE: This map has been specifically prepared for the application of registration to certain pieces of land. It does not show all land proposed, identified or discussed as wilderness. Information on land affected by actions under the Wilderness Act is available from DECCW.

Map compiled from: NPWS and SF boundaries data from NSW NPWS and FNSW  
 Administrative and Infrastructure data from NSW LPI

Copyright NSW Government, December 2010

This map is not guaranteed to be free from error or omission. Therefore, the State of NSW and its employees disclaim liability for any act done or omission made in the information on the map and any consequences of such act or omission.

