

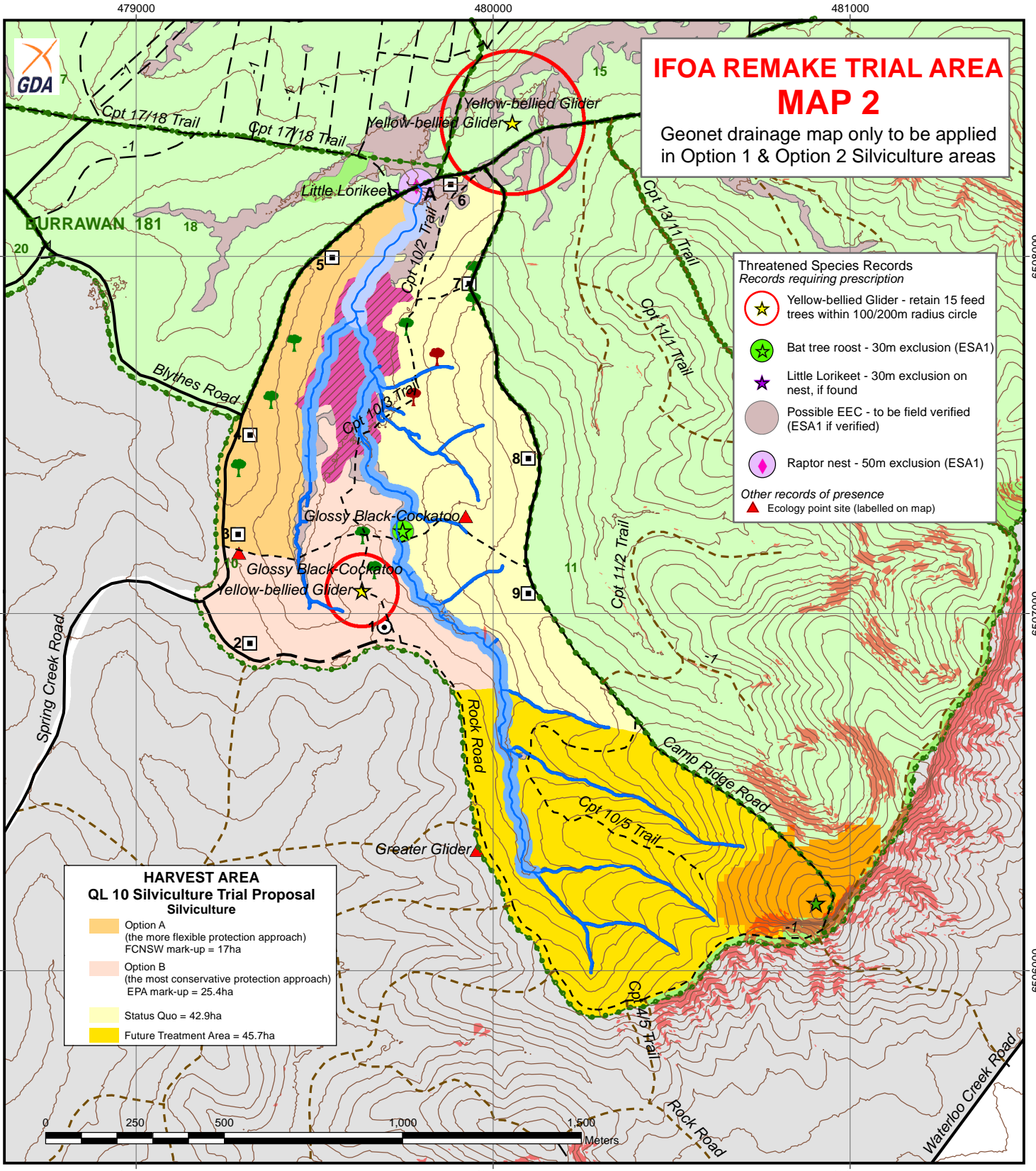
Scale: 1:15,000  
 Datum: GDA94  
 Projection: MGA  
 Map Sheets:  
 1:25,000: Grants Head 9434-1N  
 1:100,000: Camden Haven 9434  
 Contour Interval 10m



# Harvest Plan Operational Map Compartment 10 Queens Lake State Forest Hardwood Forests - Kendall MA



Approval Date: 08/07/2015  
 Controlled Map: QLake10\_HPOM\_IFOATrialMap2



**IFOA REMAKE TRIAL AREA  
 MAP 2**  
 Geonet drainage map only to be applied  
 in Option 1 & Option 2 Silviculture areas

- Threatened Species Records**  
*Records requiring prescription*
- Yellow-bellied Glider - retain 15 feed trees within 100/200m radius circle
  - Bat tree roost - 30m exclusion (ESA1)
  - Little Lorikeet - 30m exclusion on nest, if found
  - Possible EEC - to be field verified (ESA1 if verified)
  - Raptor nest - 50m exclusion (ESA1)
- Other records of presence*
- Ecology point site (labelled on map)

- HARVEST AREA**  
**QL 10 Silviculture Trial Proposal**  
**Silviculture**
- Option A (the more flexible protection approach)  
FCNSW mark-up = 17ha
  - Option B (the most conservative protection approach)  
EPA mark-up = 25.4ha
  - Status Quo = 42.9ha
  - Future Treatment Area = 45.7ha

- |   |   |   |  |
|---|---|---|--|
| <p><b>MAP FEATURES</b></p> <ul style="list-style-type: none"> <li> State Forest Boundary</li> <li> Compartments Boundary</li> <li> 1 Km Grid</li> <li> 10m Contour (LiDAR)</li> <li> State Forest</li> <li> Heritage Site</li> <li> Elite/Plus Trees</li> <li> Special Trees</li> </ul> | <p><b>ROADS, DUMPS &amp; CROSSINGS</b></p> <ul style="list-style-type: none"> <li> Sealed road</li> <li> Gravel Road</li> <li> Natural Surface Road</li> <li> Not to be used for haulage</li> <li> Roads outside harvest area</li> <li> New construction</li> <li> Temporary Dry</li> <li> Temporary Wet</li> <li> Approved Crossing</li> </ul> | <p><b>EXCLUSIONS</b></p> <ul style="list-style-type: none"> <li> National Park</li> <li><b>ESA 1 (Environmentally Significant Area 1)</b></li> <li> Rainforest</li> <li><b>ESA 2 (Environmentally Significant Area 2)</b></li> <li> Owl Landscape Protection</li> <li> High Conservation Value Old Growth</li> <li> Harvesting Protection (FMZ 3A)</li> <li> Slopes &gt; 30 (indicative LiDAR)</li> </ul> | <p><b>DRAINAGE FEATURES</b></p> <ul style="list-style-type: none"> <li> Geonet Drainage Line</li> <li> Class 1 (Protection 5m - ESA1)</li> <li> Class 2 (Protection 20m - ESA1)</li> <li> Class 3 (Protection 30m - ESA1)</li> </ul> |
|---|---|---|--|

Prepared by: Sarah Gormley  
 Date: July 2015