

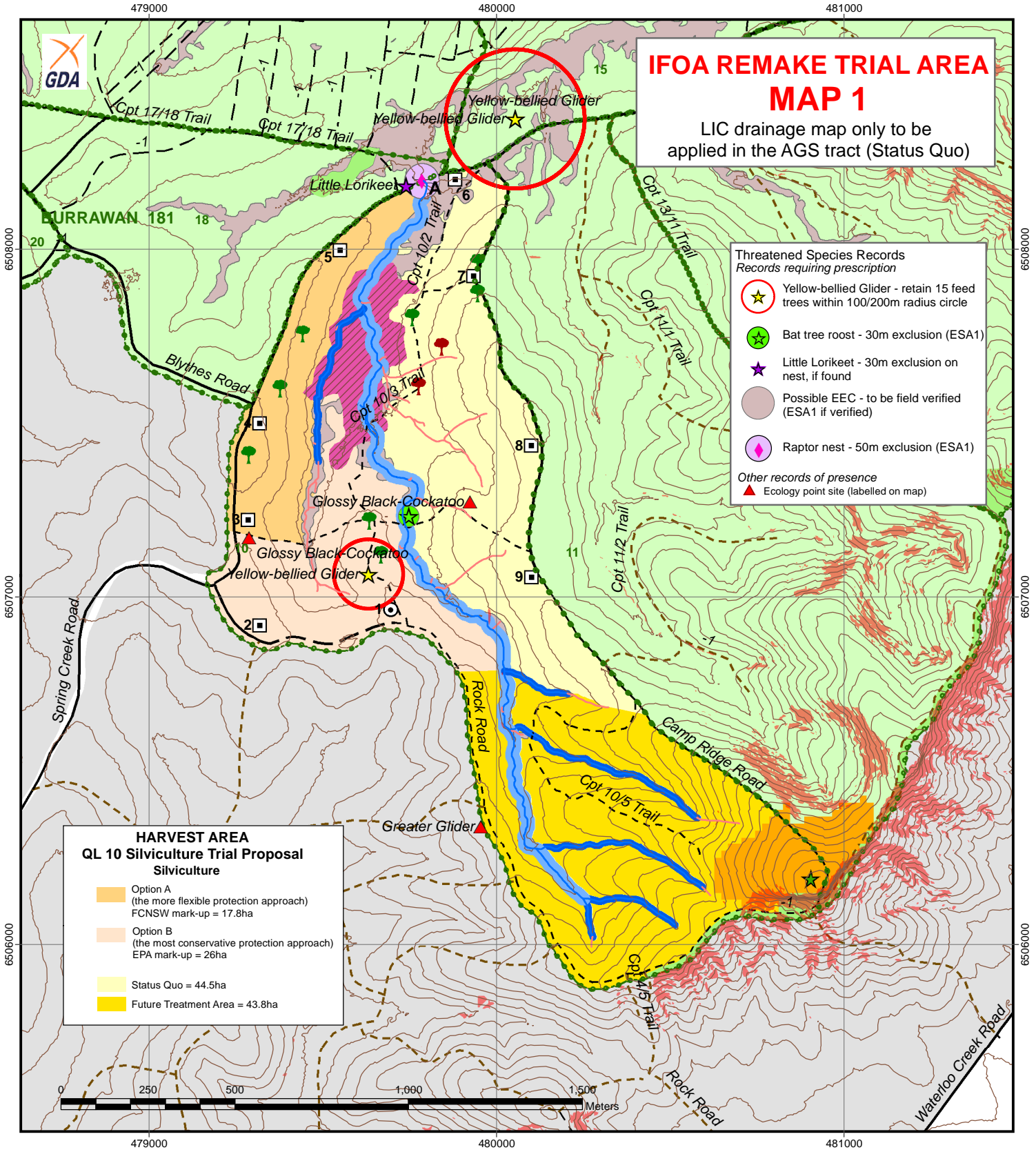
Scale: 1:15,000  
 Datum: GDA94  
 Projection: MGA  
 Map Sheets:  
 1:25,000: Grants Head 9434-1N  
 1:100,000: Camden Haven 9434  
 Contour Interval 10m



# Harvest Plan Operational Map Compartment 10 Queens Lake State Forest Hardwood Forests - Kendall MA



Approval Date: 08/07/2015  
 Controlled Map: QL10\_HPOM\_IFOATrialMap1



**IFOA REMAKE TRIAL AREA  
 MAP 1**  
 LIC drainage map only to be  
 applied in the AGS tract (Status Quo)

- Threatened Species Records**  
*Records requiring prescription*
- Yellow-bellied Glider - retain 15 feed trees within 100/200m radius circle
  - Bat tree roost - 30m exclusion (ESA1)
  - Little Lorikeet - 30m exclusion on nest, if found
  - Possible EEC - to be field verified (ESA1 if verified)
  - Raptor nest - 50m exclusion (ESA1)
- Other records of presence*
- Ecology point site (labelled on map)

**HARVEST AREA  
 QL 10 Silviculture Trial Proposal**  
 Silviculture

- Option A (the more flexible protection approach) FCNSW mark-up = 17.8ha
- Option B (the most conservative protection approach) EPA mark-up = 26ha
- Status Quo = 44.5ha
- Future Treatment Area = 43.8ha



- |   |   |   |   |
|---|---|---|---|
| <p><b>MAP FEATURES</b></p> <ul style="list-style-type: none"> <li> State Forest Boundary</li> <li> Compartments Boundary</li> <li> 1 Km Grid</li> <li> 10m Contour (LiDAR)</li> <li> State Forest</li> <li> Heritage Site</li> <li> Elite/Plus Trees</li> <li> Special Trees</li> </ul> | <p><b>ROADS, DUMPS &amp; CROSSINGS</b></p> <ul style="list-style-type: none"> <li> Sealed road</li> <li> Gravel Road</li> <li> Natural Surface Road</li> <li> Not to be used for haulage</li> <li> Roads outside harvest area</li> <li> New construction</li> <li> Temporary Dry</li> <li> Temporary Wet</li> <li> Approved Crossing</li> </ul> | <p><b>EXCLUSIONS</b></p> <ul style="list-style-type: none"> <li> National Park</li> <li><b>4 Bar Exclusion</b></li> <li> Rainforest</li> <li><b>3 Bar Limited Falling</b></li> <li> Owl Landscape Protection</li> <li> High Conservation Value Old Growth</li> <li> Harvesting Protection (FMZ 3A)</li> <li> Slopes &gt;30° (indicative LiDAR)</li> </ul> | <p><b>DRAINAGE FEATURES</b></p> <ul style="list-style-type: none"> <li> Spatially Corrected LIC Drainage (LiDAR)</li> <li> Unmapped Drainage Feature</li> <li> 1st Order (Protection 10m)</li> <li> 2nd Order (Protection 20m)</li> </ul> |
|---|---|---|---|