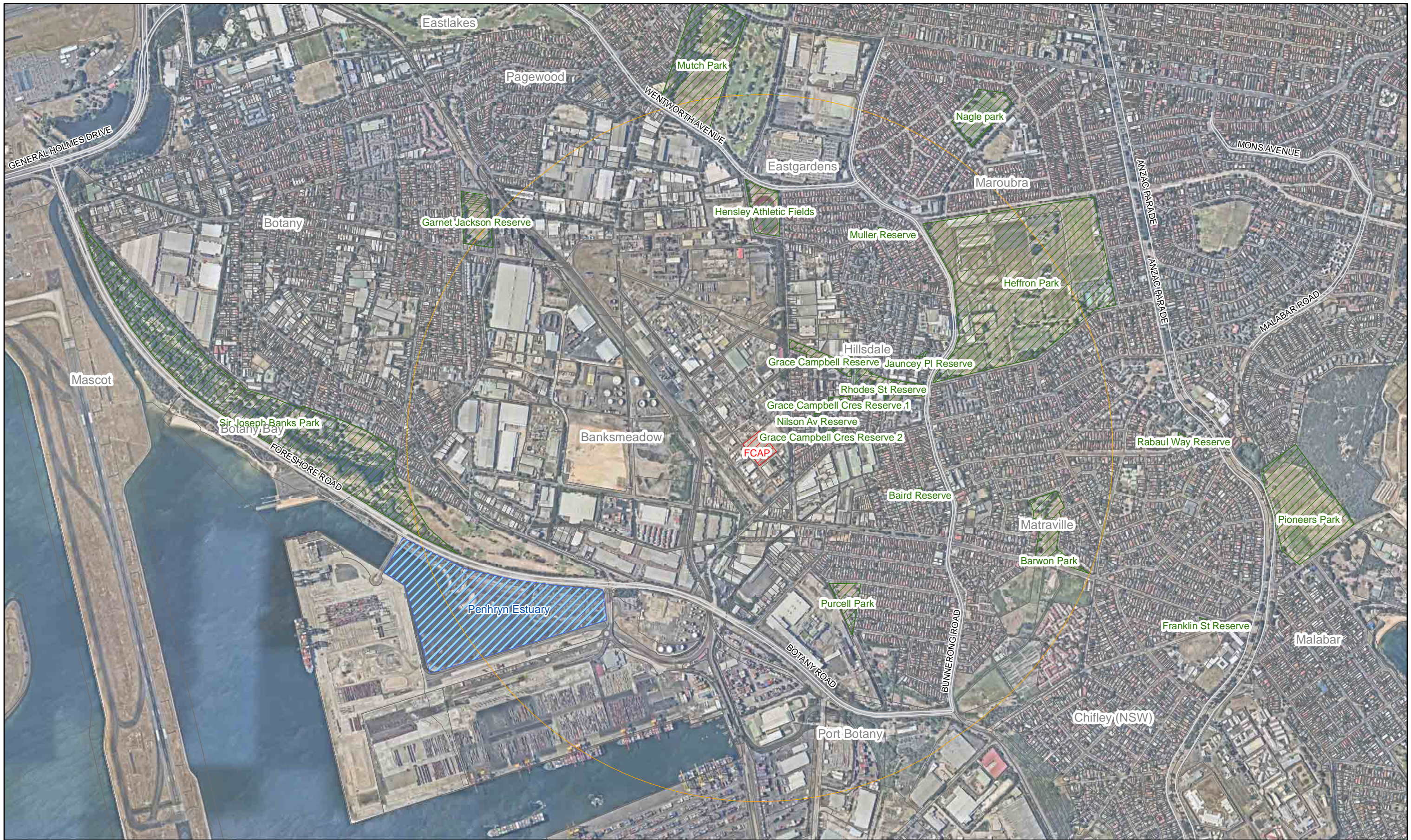




**Attachment A – Figures**





- Former Chlor-Alkali Plant
- 1500m distance from FCAP
- Park\_boundary
- Penhryn Estuary

Image Source: Nearmap.  
Aerial dated 11 September 2014



Site Location & Features

Project 00045970  
Orica Mercury Independent Review Stage 2

FIGURE 1





**Total Mercury Concentration**

- All results less than Standard Residential guidelines (40mg/kg)
- 1 or more results greater than Standard Residential guidelines (40mg/kg)
- 1 or more results greater than Public Open Spaces guidelines (80mg/kg)
- ▨ Former Chlor-Alkali Plant

500 250 0 500 Metres



Soil Sampling Results - Total Mercury  
(surface samples 0 - 0.05m and depth samples 0.4 - 0.5m)

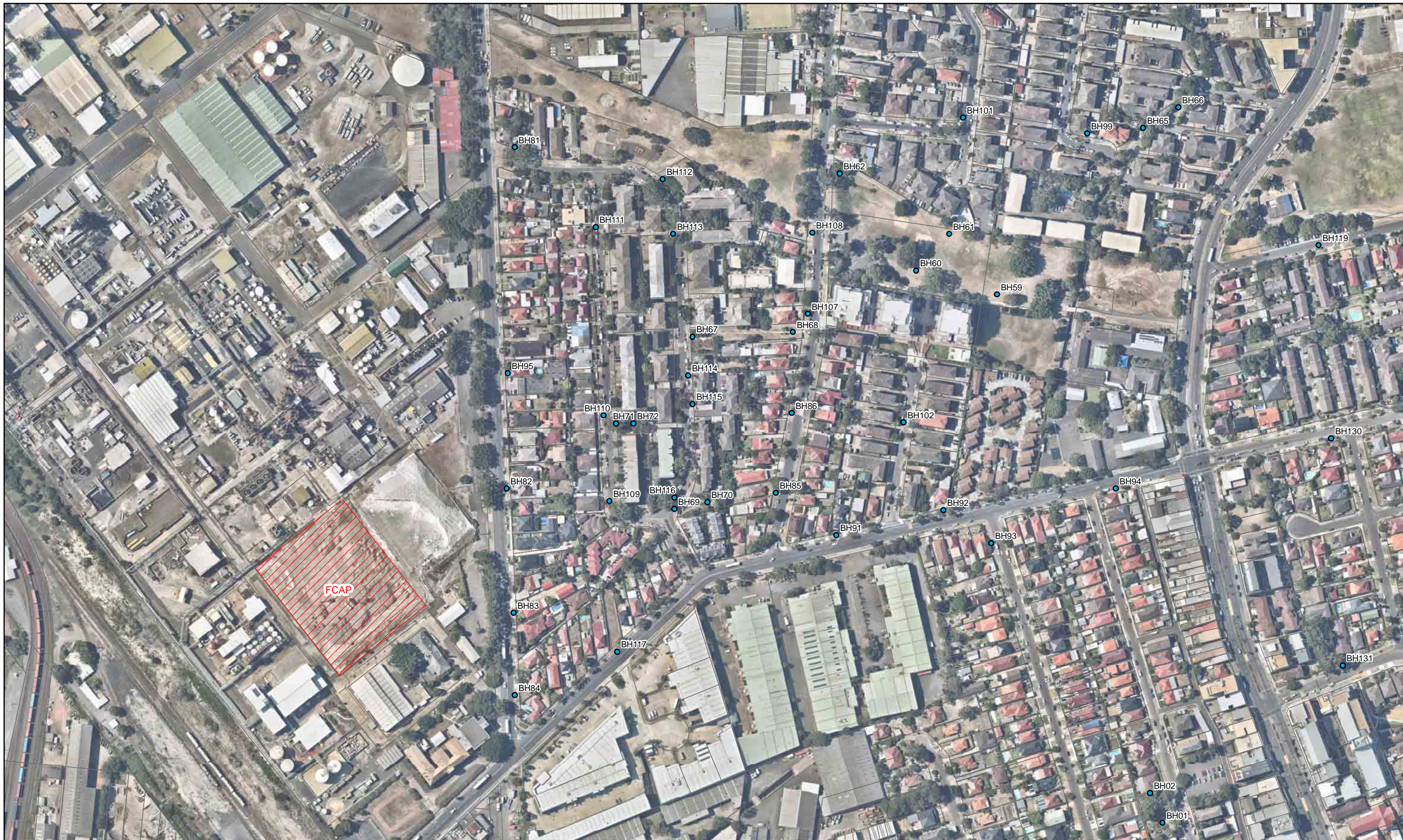
Project 00045970  
Orica Mercury Independent Review Stage 2

Image Source: Nearmap.  
Aerial dated 11 September 2014



FIGURE 2a





**Total Mercury Concentration**

- All results less than Standard Residential guidelines (40mg/kg)
- 1 or more results greater than Standard Residential guidelines (40mg/kg)
- 1 or more results greater than Public Open Spaces guidelines (80mg/kg)

▨ Former Chlor-Alkali Plant

Image Source: Nearmap.  
Aerial dated 11 September 2014

100 50 0 100 Metres



Soil Sampling Results - Total Mercury  
(surface samples 0 - 0.05m and depth samples 0.4 - 0.5m)

Project 00045970  
Orica Mercury Independent Review Stage 2





**Chemical Concentrations**

- All results less than Standard Residential guidelines
- One or more results greater than Standard Residential guidelines
- One or more results greater than Public Open Space guidelines
- Former Chlor-Alkali Plant



Soil Sampling Results - Lead, Chromium, PAHs, PCBs  
(surface samples 0 - 0.05m)

Project 00045970  
Orica Mercury Independent Review Stage 2



Image Source: Nearmap.  
Aerial dated 11 September 2014

FIGURE 2c





**Mercury Vapour Concentration**

- Inaccessible
- Less than guidelines ( $0.2\mu\text{g}/\text{m}^3$ )
- More than guidelines ( $0.2\mu\text{g}/\text{m}^3$ )


 Former Chlor-Alkali Plant

Image Source: Nearmap.  
Aerial dated 11 September 2014

500 250 0 500 Metres



Mercury Vapour Sampling Results  
(Concentration at 1m above ground level)

Project 00045970  
Orica Mercury Independent Review Stage 2





**Mercury Vapour Concentration**

- Inaccessible
- Less than Guidelines ( $0.2\mu\text{g}/\text{m}^3$ )
- Greater than Guidelines ( $0.2\mu\text{g}/\text{m}^3$ )
- ▨ Former Chlor-Alkali Plant

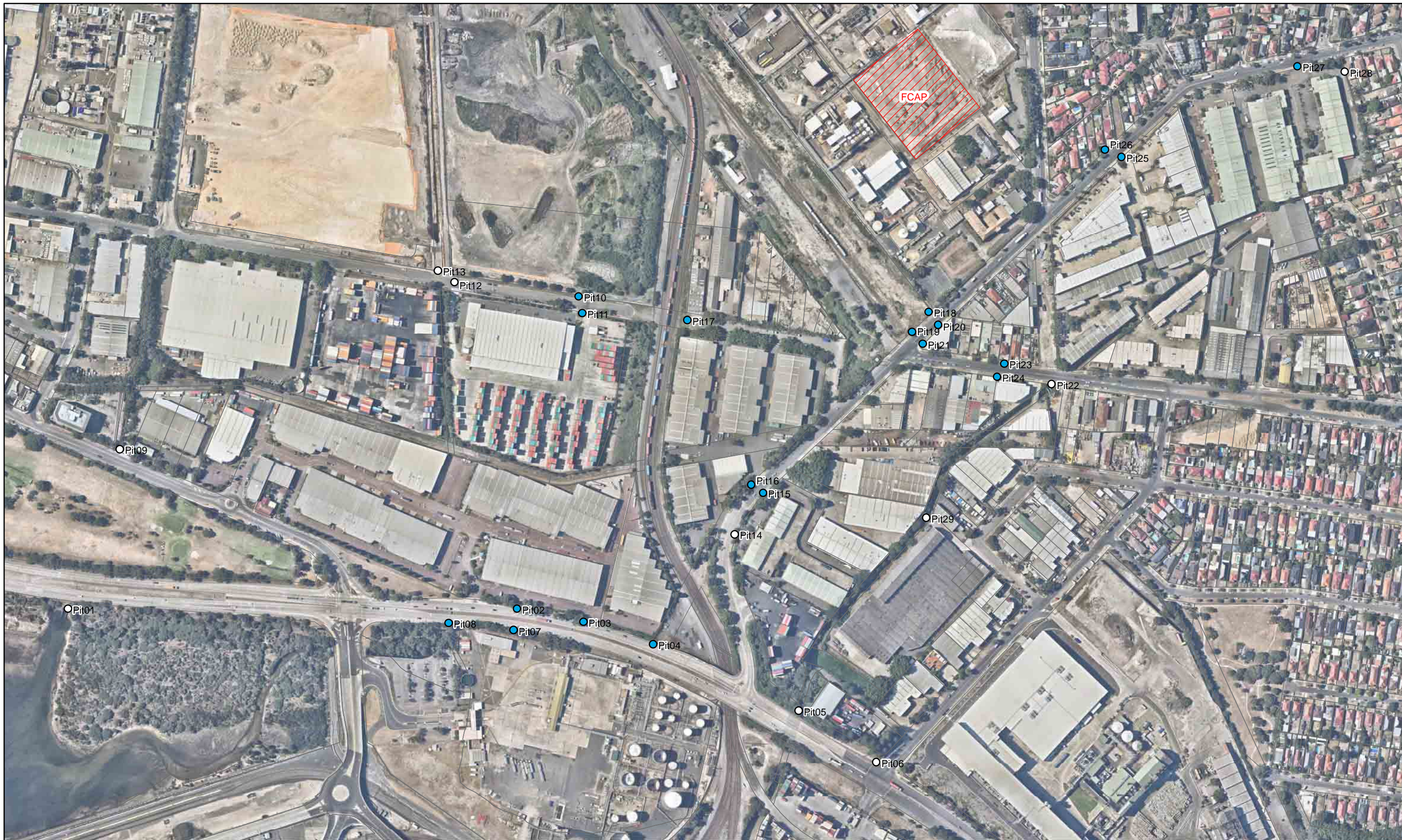
Image Source: Nearthmap.  
Aerial dated 11 September 2014



Mercury Vapour Sampling Results  
(Concentration at pit entrance or ground level)

Project 00045970  
Orica Mercury Independent Review Stage 2





**Mercury Vapour Concentration**

- Inaccessible
- Less than guidelines ( $0.2\mu\text{g}/\text{m}^3$ )
- More than guidelines ( $0.2\mu\text{g}/\text{m}^3$ )
- ▨ Former Chlor-Alkali Plant

Image Source: Nearmap.  
Aerial dated 11 September 2014

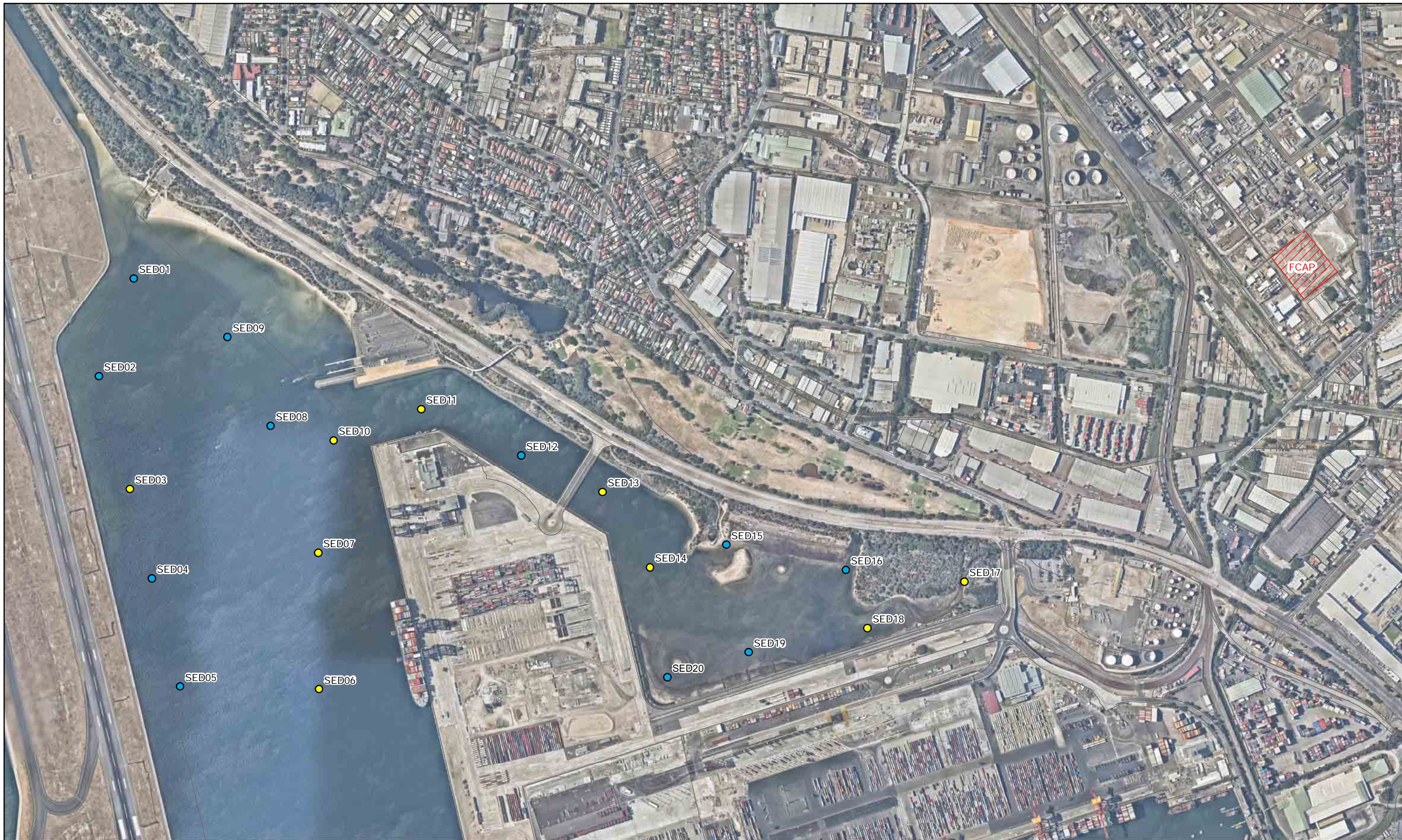
150 75 0 150 Metres



Mercury Vapour Sampling Results  
(Concentration inside pits)

Project 00045970  
Orica Mercury Independent Review Stage 2





**Total Mercury Concentration**

- Less than 'ISQG - Low' guidelines (0.15mg/kg)
- More than 'ISQG - Low' guidelines (0.15mg/kg)
- More than 'ISQG - High' guidelines (1.0mg/kg)

▨ Former Chlor-Alkali Plant

300 150 0 300 Metres



Sediment Sampling Results - Total Mercury  
(sediment depth 0 - 0.05m)

Project 00045970  
Orica Mercury Independent Review Stage 2

Image Source: Nearmap.  
Aerial dated 11 September 2014



FIGURE 4