

148.5°

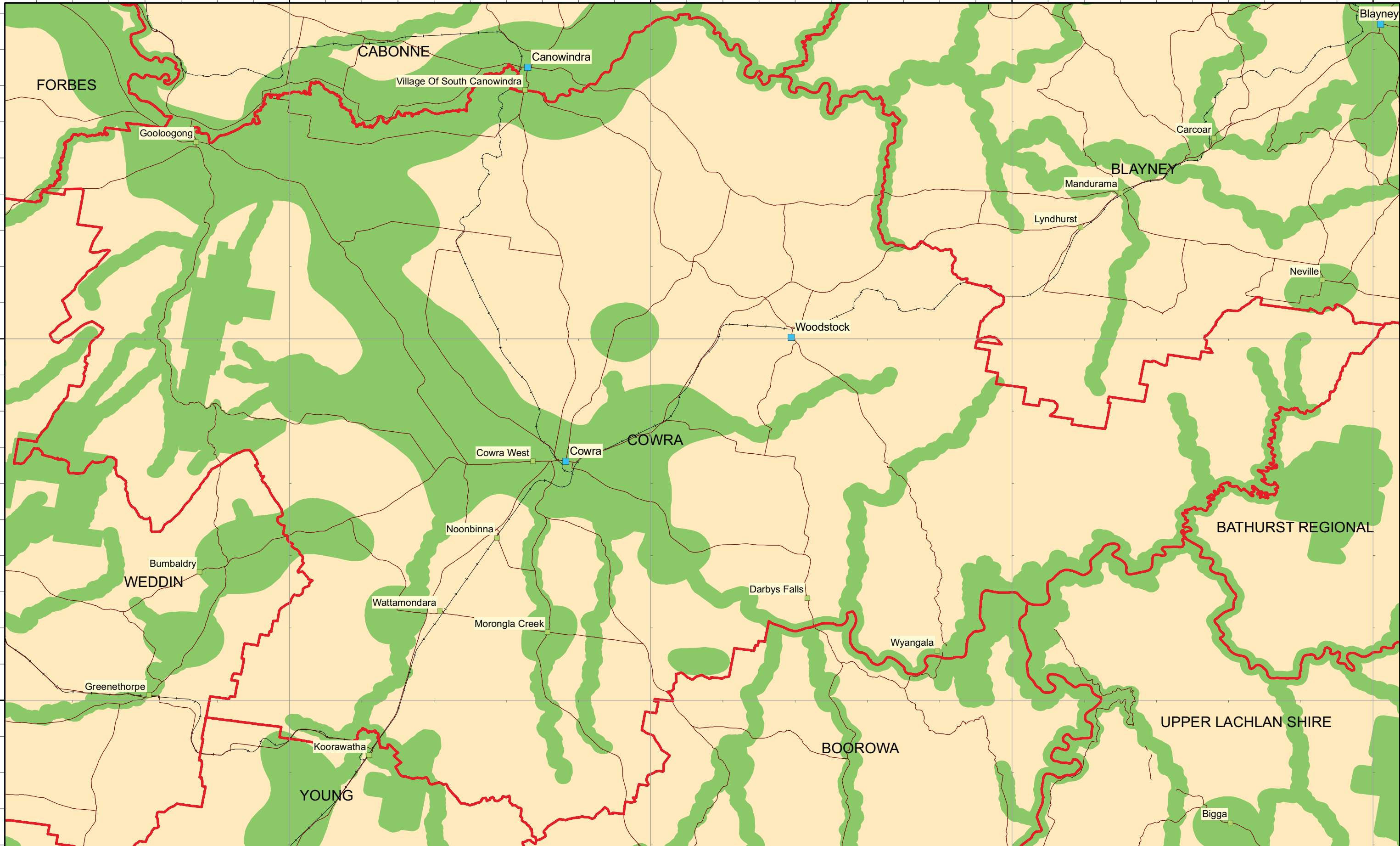
148.75°

149°

149.25°

-33.75°



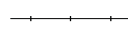

-34°



UPSS Regulation - Sensitive Zones Map

COWRA SHIRE COUNCIL

Copyright Department of Environment, Climate Change and Water (NSW)
 This map is not guaranteed to be free from error or omission
 The Department of Environment, Climate Change and Water (NSW) and its employees
 disclaim liability for any act done on the information in the
 map and any consequences of such acts or omissions

- Legend**
-  Council Area
 -  Main Road
 -  Railway
 -  Sensitive Zone

Datum/Projection: GCS GDA 1994

Jan 12, 2010



Scale at A3
 1 cm equals 2.7 km

